

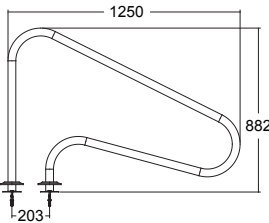


**EXIT HANDRAILS**



**Anchor Type**

**Flange Type**



**ARG Series**

Polished AISI-304 or AISI-316 Stainless Steel ( $\Phi$  42mm) pipe. Both anchor and flange installations are available.

**Anchor Type**

Model	Description	Code
ARG	AISI 304 Exit Handrail	88074505
ARG	AISI 316 Exit Handrail	88074510

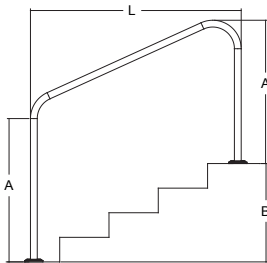
**Flange Type**

Model	Description	Code
ARG-F	AISI 304 Exit Handrail	88074405
ARG-F	AISI 316 Exit Handrail	88074410



**Anchor Type**

**Flange Type**



**ARN Series**

Polished AISI-304 or AISI-316 Stainless Steel ( $\Phi$  42mm) pipe. Both anchor and flange installations are available. Suitable for 4 steps or 5 steps of concrete step.

**Anchor Type**

Code (AISI-304)	Code (AISI-316)	Model	Description	L mm	A mm	B mm
88074703	88074708	ARN415	Exit Handrail - 4 Steps	1220	800	608
88074704	88074709	ARN515	Exit Handrail - 5 Steps	1524	800	855

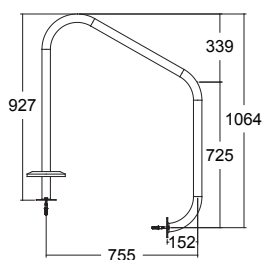
**Flange Type**

Code (AISI-304)	Code (AISI-316)	Model	Description	L mm	A mm	B mm
88074603	88074608	ARN415-F	Exit Handrail - 4 Steps	1220	800	608
88074604	88074609	ARN515-F	Exit Handrail - 5 Steps	1524	800	855



**Anchor Type**

**Flange Type**



**ARS Series**

Polished AISI-304 or AISI-316 Stainless Steel ( $\Phi$  42mm) pipe. Both anchor and flange installations are available.

**Anchor Type**

Model	Description	Code
ARS	AISI 304 Exit Handrail	88074905
ARS	AISI 316 Exit Handrail	88074910

**Flange Type**

Model	Description	Code
ARS-F	AISI 304 Exit Handrail	88074805
ARS-F	AISI 316 Exit Handrail	88074810

